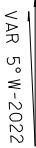
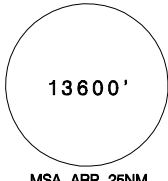
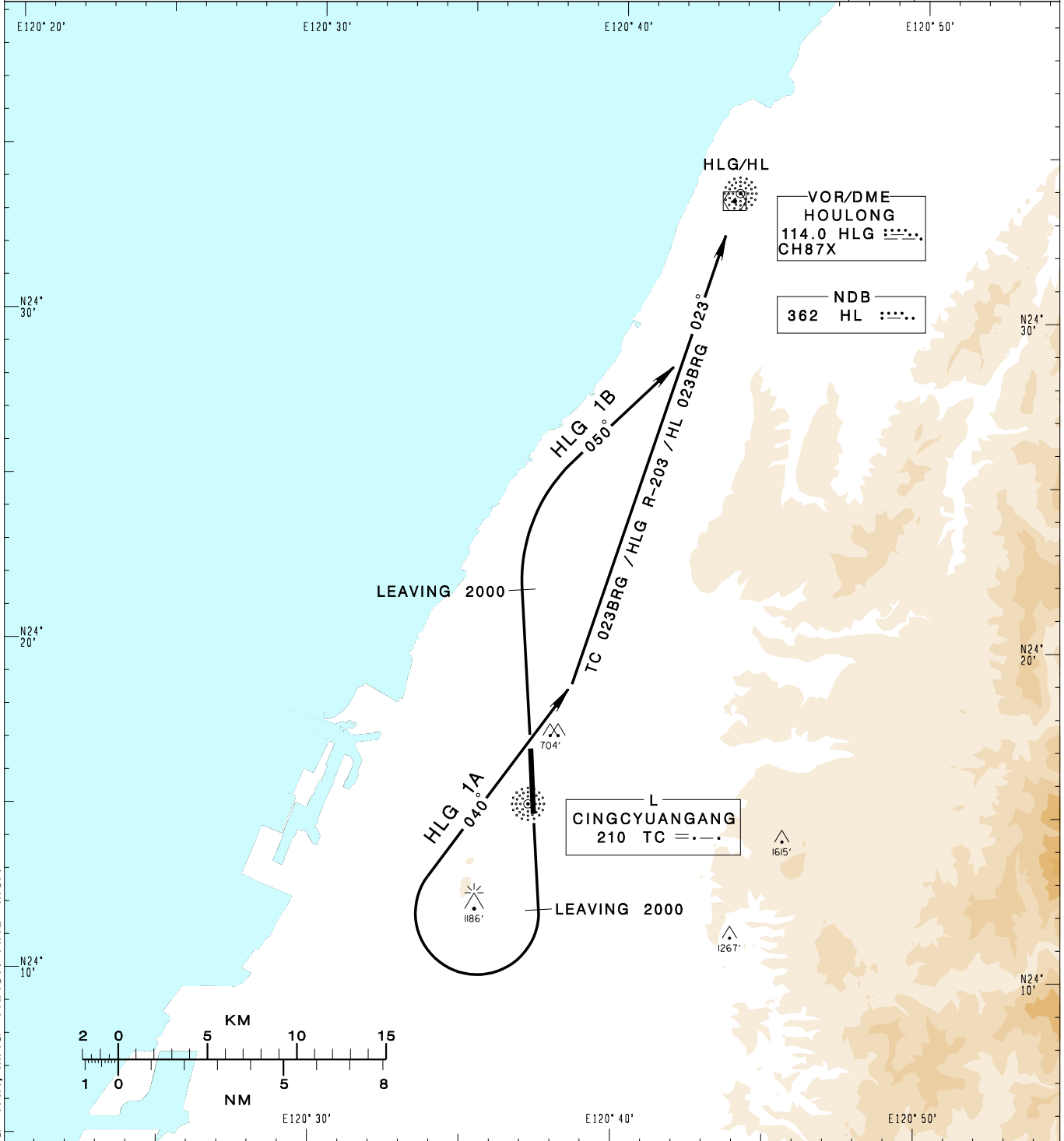


臺中/清泉崗機場
TAICHUNG/CINGCYUANGANG AD

RCMQ SID
HLG 1A(RWY18)
HLG 1B(RWY36)

TAIPEI APP 130.1 129.6	TAICHUNG TWR 118.75 120.25	ATIS 127.75			
Apt Elev: 665'		Trans Level: FL130			Trans Alt: 11,000'
BEARINGS ARE MAGNETIC; DISTANCES ARE NAUTICAL MILES; ELEVATIONS, HEIGHTS IN FEET					



CHANGES: UPDATE MAG VAR; MAG TRACK AND MSA

HOULONG ONE ALFA DEPARTURE
Depart on RWY HDG until leaving 2,000, turn right HDG 040 to track TC 023BRG/HLG R-203/HL 023BRG to HLG/HL.

HOULONG ONE BRAVO DEPARTURE
Depart on RWY HDG until leaving 2,000, turn right HDG 050 to track TC 023BRG/HLG R-203/HL 023BRG to HLG/HL.

NOTE
1. HLG 1A, HLG 1B: Requires a minimum climb gradient of 5% (300ft/NM) until 2000ft.
2. Caution close-in obstacles (trees) 704ft MSL, 150m northeast of RWY36 DER.